

Implantation

Chemin Praz la Vellaz - Parcelle n° 161 - Surface : 1318m²

1/300

Villvert SA - Av. Haldimand 41 - 1401 Yverdon-les-Bains

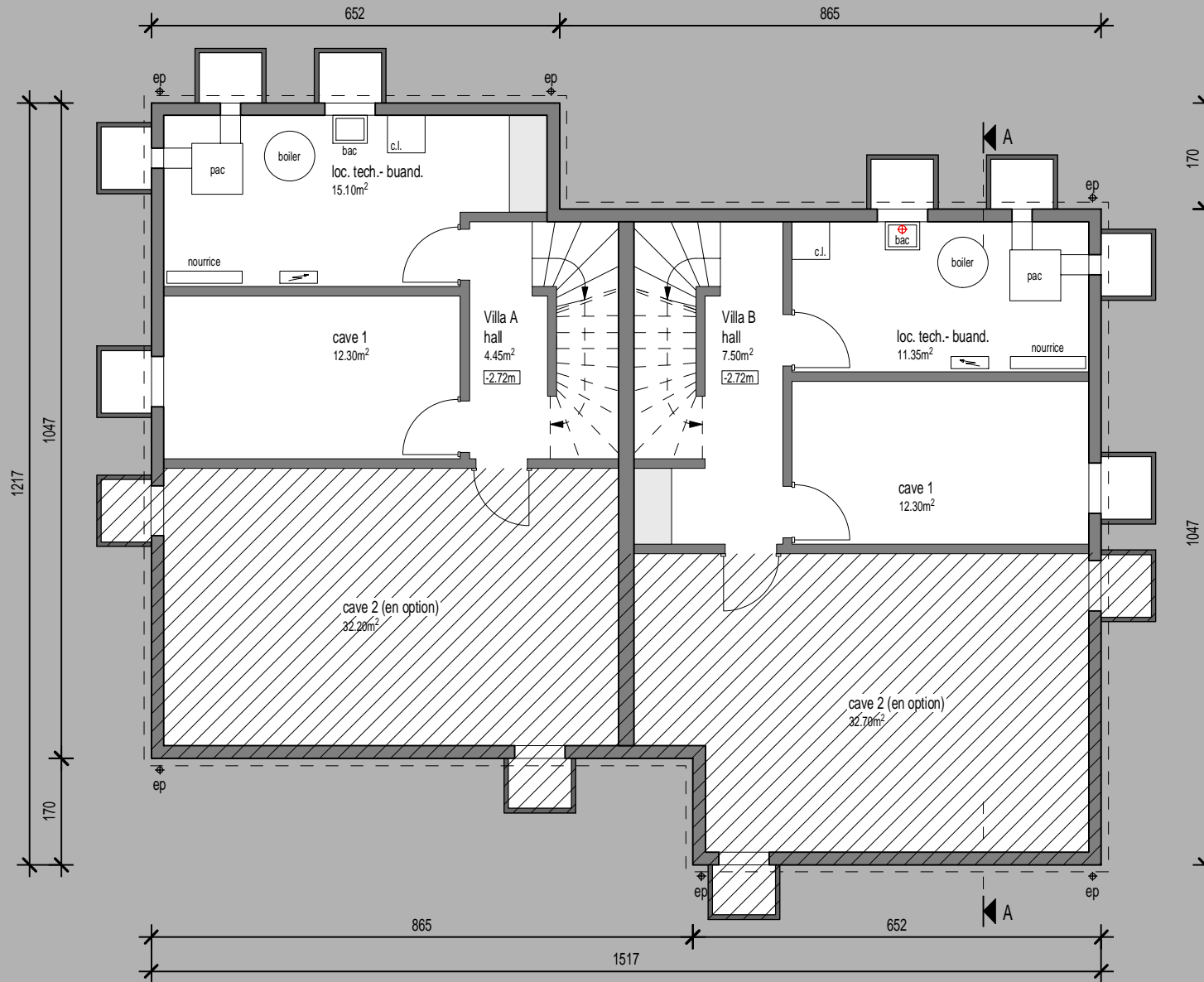
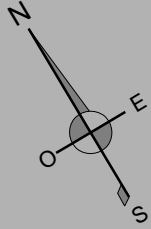
Tél: 024 / 423.00.90 - Fax: 024 / 426.45.08 - www.villvert.ch



Construction de 2 villas mitoyennes à Servion



Construction de 2 villas mitoyennes à Servion



Construction de 2 villas mitoyennes à Servion

Villa A :

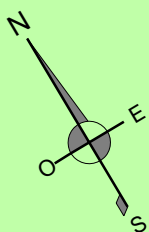
Surface brute :
Rez : 69.55m²
Terrasse : 30.80m²
Jardin,
Places de parc

Surface habitable :
65.60m²

Villa B :

Surface brute :
Rez : 69.55m²
Terrasse : 30.30m²
Jardin,
Places de parc

Surface habitable :
65.40m²



Villa A :

Surface brute :

Etage : 69.55m²

Surface habitable :

65.80m²

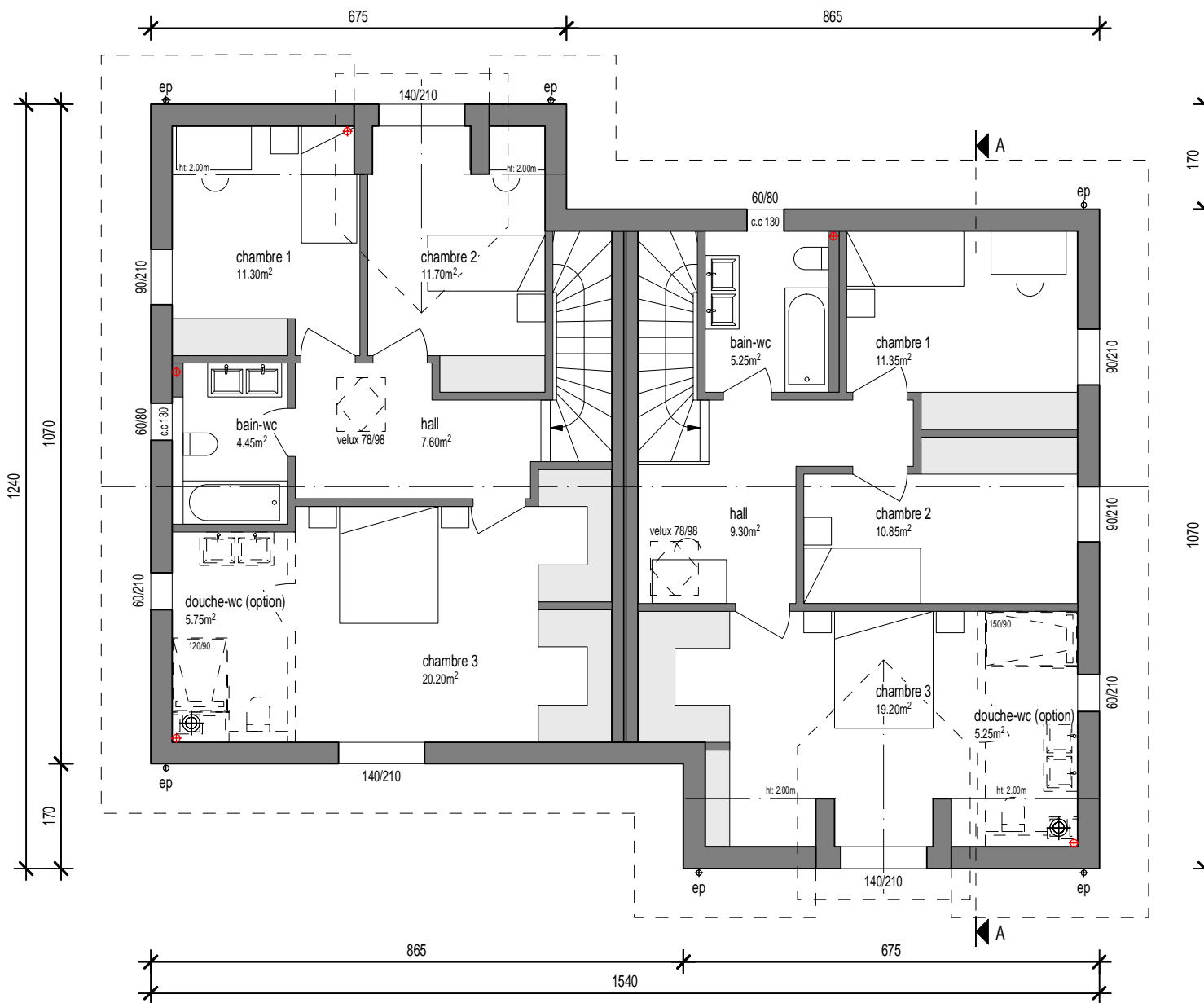
Villa B :

Surface brute :

Etage : 69.55m²

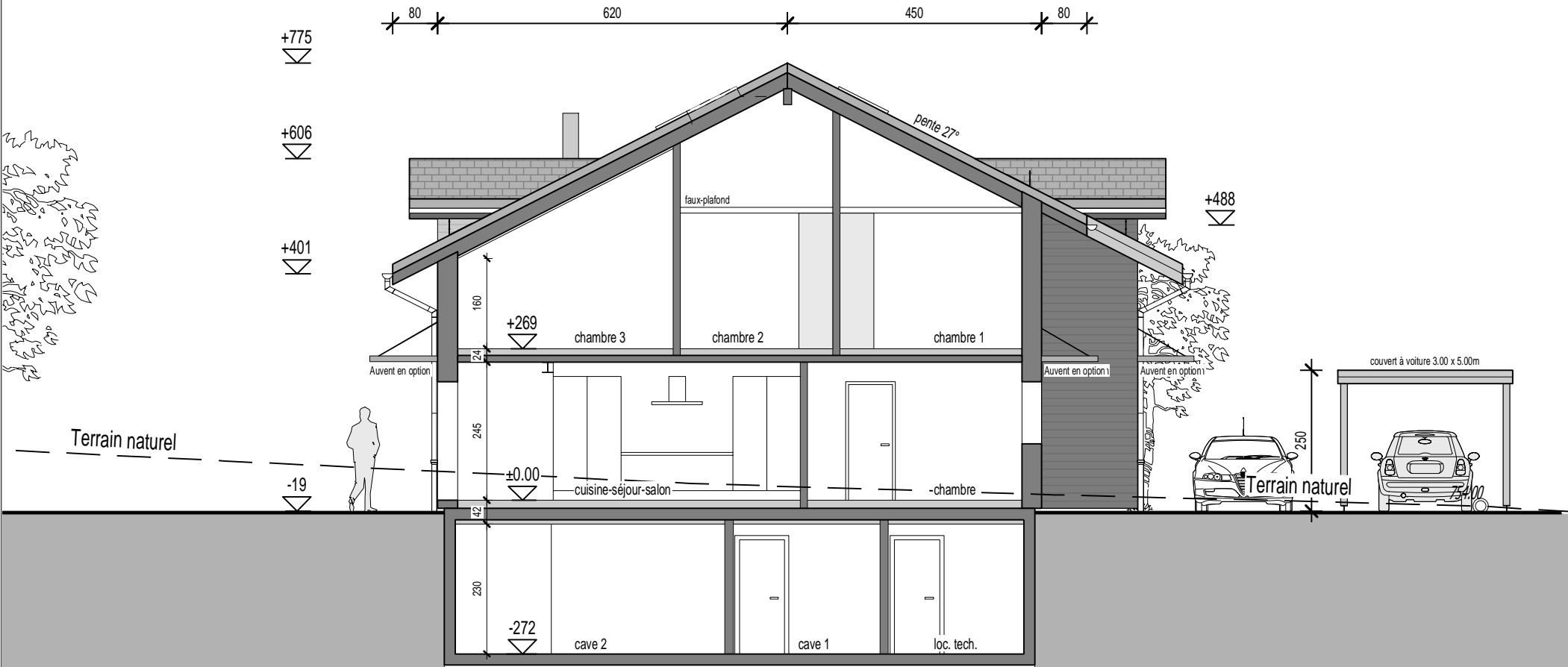
Surface habitable :

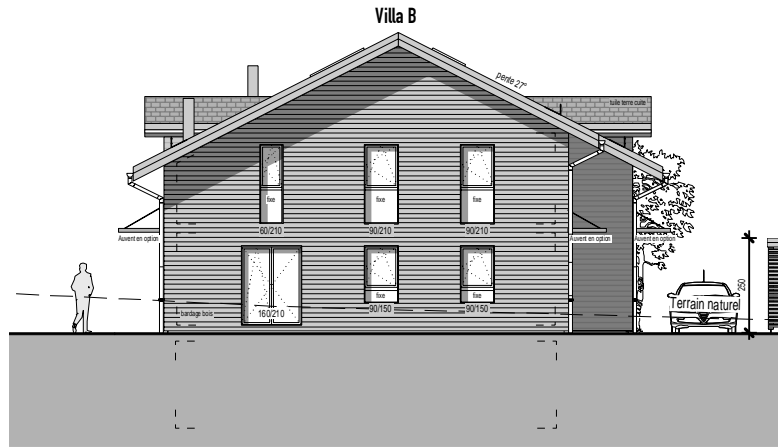
65.45m²



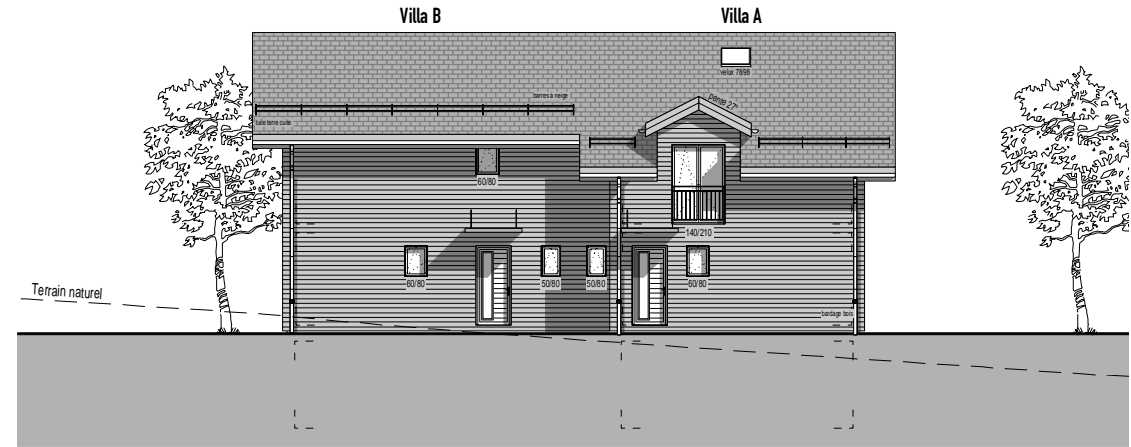
Construction de 2 villas mitoyennes à Servion

Villa B

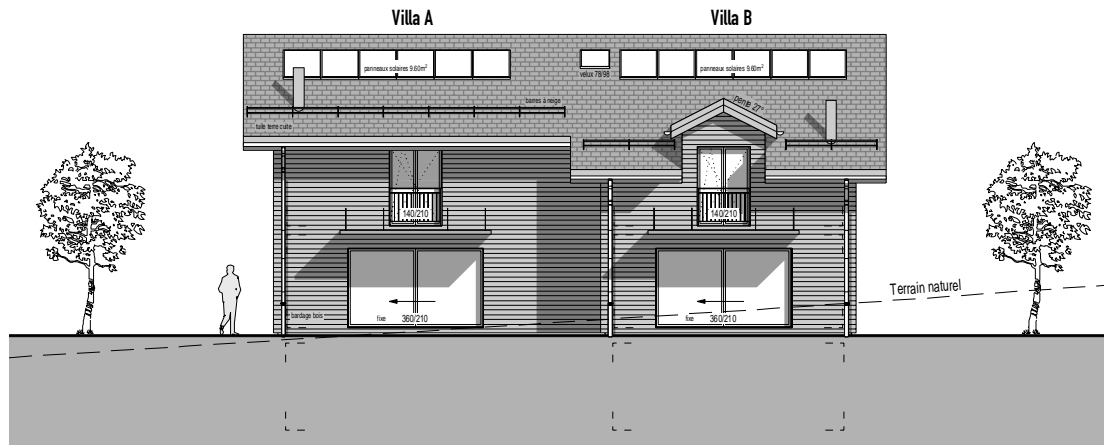




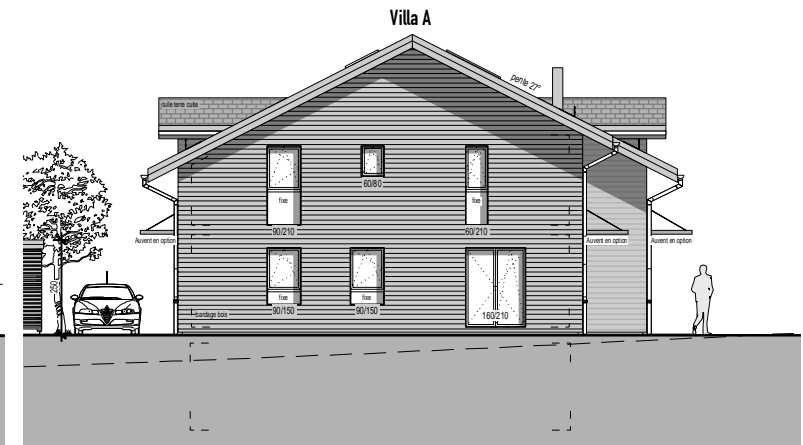
Facade Sud-Est



Facade Nord-Est



Facade Sud-Ouest



Facade Nord-Ouest